

CREIGHTON UNIVERSITY HEALTH SCIENCES CAMPUS – PHOENIX

Creighton's Impact *in Arizona*

With the opening of our Phoenix health sciences campus in 2021, Creighton University has expanded its presence in Arizona. With a focus on interprofessional education, we're helping passionate students become the compassionate professionals the Southwest needs. By 2025, we project that the Phoenix campus will be home to nearly 1,000 health sciences students.



Interprofessional Education Offered in Partnership with St. Vincent de Paul Clinic

- Students in all disciplines spend time at the clinic
- The clinic offers holistic, collaborative care regardless of patients' insurance or ability to pay

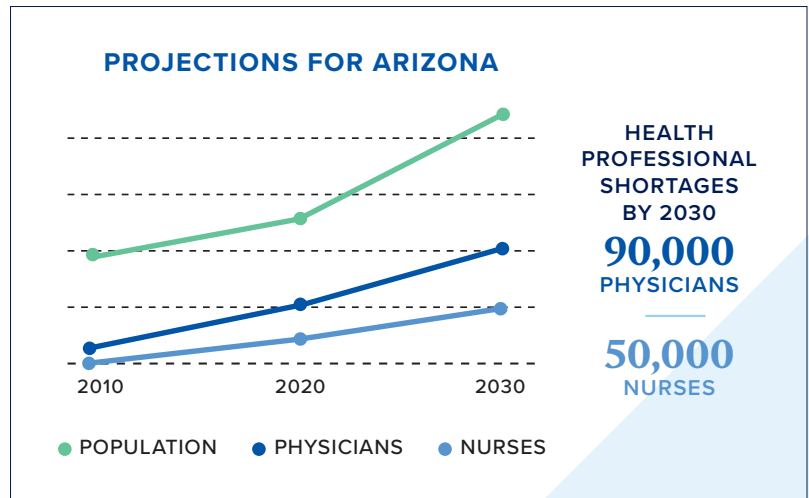
12 Laboratories with Collaboration Opportunities

16,000+ sq. ft. of student collaboration space

- Gait and motion analysis lab
- Task training lab
- Acute care lab
- Ambulatory care labs
- Pharmacy simulation lab
- Rehabilitation lab
- Standardized patient simulation suites
- High-fidelity simulation suites
- Home care lab
- Anatomy lab
- Human performance lab
- Virtual reality lab

Educating the Next Generation of Providers

Creighton is poised to help meet the growing need for healthcare professionals in the Southwest.



CREIGHTON UNIVERSITY ARIZONA HEALTH EDUCATION ALLIANCE

A Partnership for a Healthier Arizona

The Creighton Alliance includes Creighton University, Dignity Health St. Joseph's Hospital and Medical Center, Valleywise Health and District Medical Group.

The partnership:

- Provides hands-on patient-care experience in prominent Phoenix facilities
- Gives learners access to state-of-the-art facilities and a diverse patient population
- Aims to increase healthcare providers in the region



Economic Impact

Projected impact of the campus in Phoenix in the first 10 years.

Includes the impact of construction (2020), operations (2021–2030), student spending (2021–2030) and graduates (2021–2030).

23,107 jobs*

\$1.4B labor

\$3.6B economic output

\$108.6M tax revenue

**This number represents job years. A job year is one job for one year. Figures given are in 2022 dollars. Source: Creighton University; IMPLAN; Rounds Consulting Group, Inc.*

WANT TO KNOW MORE?

📷 [CreightonPhx](#) | 🐦 [@CreightonPhx](#)

📘 [Creighton University Health Sciences – Phoenix](#) | [Creighton University Health Sciences Campus - Phoenix](#)

402.280.2700 | creighton.edu/phoenix

Creighton
UNIVERSITY